

OTS10 (OTS Basic)

PRODUCT DATASHEET



1. MAIN FEATURES

Description

The OTS10 lock is an electronic lock that uses RFID technology.

This technology consists of interaction between a transmitter (key) and a receiver (lock) with unique and non-duplicable keys.

This system replaces the traditional mechanical key and cylinder, meeting all the dimensional and locking standards. Therefore, they can replace old locking systems without modifying cabinets or lockers.

Configuration

- Fully configurable by end customer.
- Access permission assignment via software.
- 3rd party SW integration via SDK.

Compatibility

- Metal Doors.
- End customer wearables.

Maintenance

- Configuration is saved after battery changes.
- Low battery indicator.
- FW update via NFC.

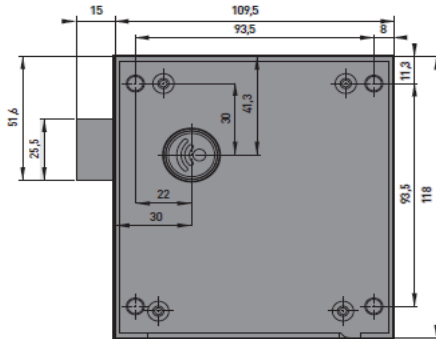
Security

- Encrypted communications.
- Vandalism-proof: Electronic components, batteries and mechanical locking system are covered inside the lock.

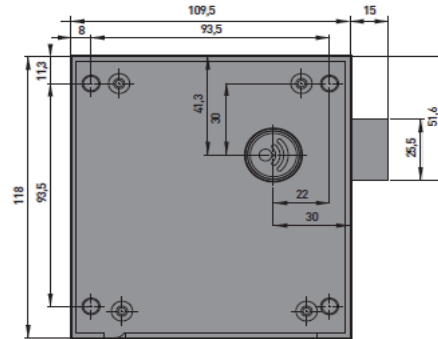
2. TECHNICAL SPECIFICATIONS

AUTHENTICATION MODES	Authentication mode	RFID
	Supported technologies	MIFARE® (Classic1K/4K 4B and 7B UID – ISO/IEC 14443)
	Reading	UID / Sector
	Wearables	RFID cards, wristbands, FOBs, Technogym key, Stickers & Transponders
	Reading range	Up to 2 cm (pressing the knob)
USAGE MODES	Free mode	Up to 3 locks simultaneously with just one wearable
	Dedicated mode with autocancellation	Up to 1 lock simultaneously with just one wearable (Only one wearable per dedicated lock)
	Dedicated mode without autocancellation	Up to 1 lock simultaneously with just one wearable (multiple wearables per dedicated lock)
	Multifunction mode	Up to 3 free and 1 dedicated lock simultaneously with just one wearable
USER INTERFACES	Lock closed notifications	Knob in closed position
	Alarms	<ul style="list-style-type: none"> • Low battery indicator (Saved in user cards) • Change battery indicator (Saved in user cards)
COMMUNICATION INTERFACES	Communication standard	NFC
	Encryption mode	AES 256
	Reading field range	Up to 2 cm (pressing the knob)
	Number of maximum connections	1
POWER SUPPLY	Batteries (Type & quantity)	4 alkaline batteries VARTA Type AA
	Battery life	Up to 10 years at room temperature (Depending on usage and configuration)
MECHANICAL CHARACTERISTICS	Dimensions	119,5 mm x 35 mm x 118 mm
	Weight	375 gr
	Knob resistance	1000 N
	Housing	Black
ENVIROMENTAL CONDITIONS	Temperature	From -10°C to 42°C (interiors)
	Humidity	< 97% (Condensation free)
	Protection type	IK09 / IP55
ORDER CODE	OTS 10 Basic	R-EA-EEL-OTS-B

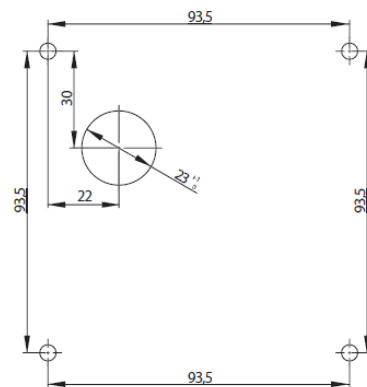
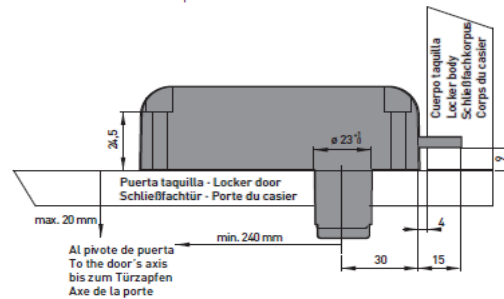
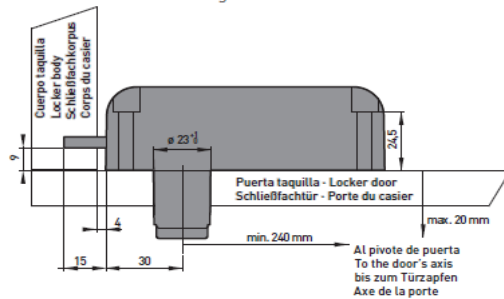
3. ASSEMBLY



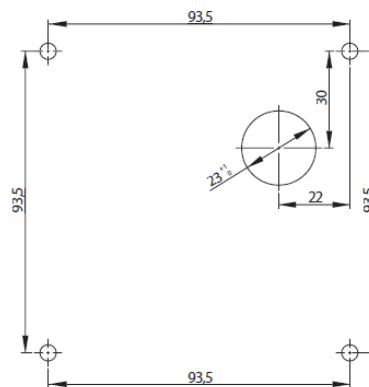
Derecha · Right · Rechts · Droite



Izquierda · Left · Links · Gauche



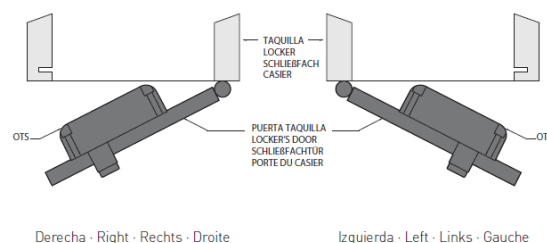
Derecha · Right · Rechts · Droite



Izquierda · Left · Links · Gauche

4. OTHER DATA

Door Material	• Phenolic
	• Glass
	• Metal (Booster needed)
	• HPL
	• Melamine
Door Thickness	<20mm
Availability	Right. / Left. Handed



5. OPTIONAL ACCESSORIES

- NFC Programmer.
- PC Software.
- Desktop reader.
- Infoterminal.
- SDK for integrators.