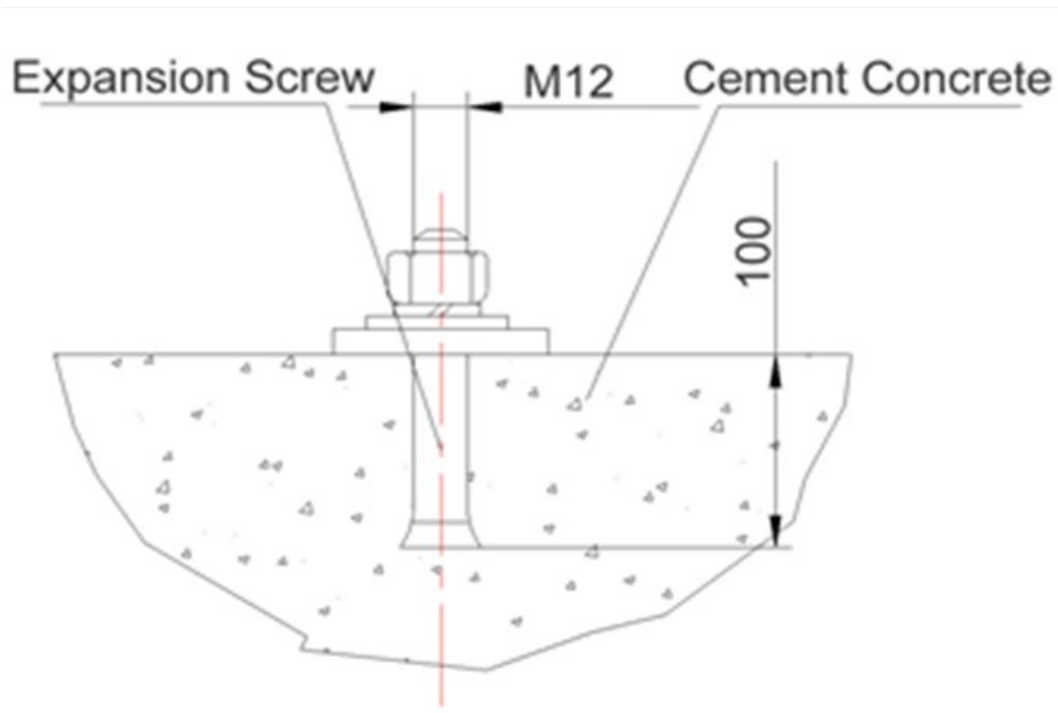
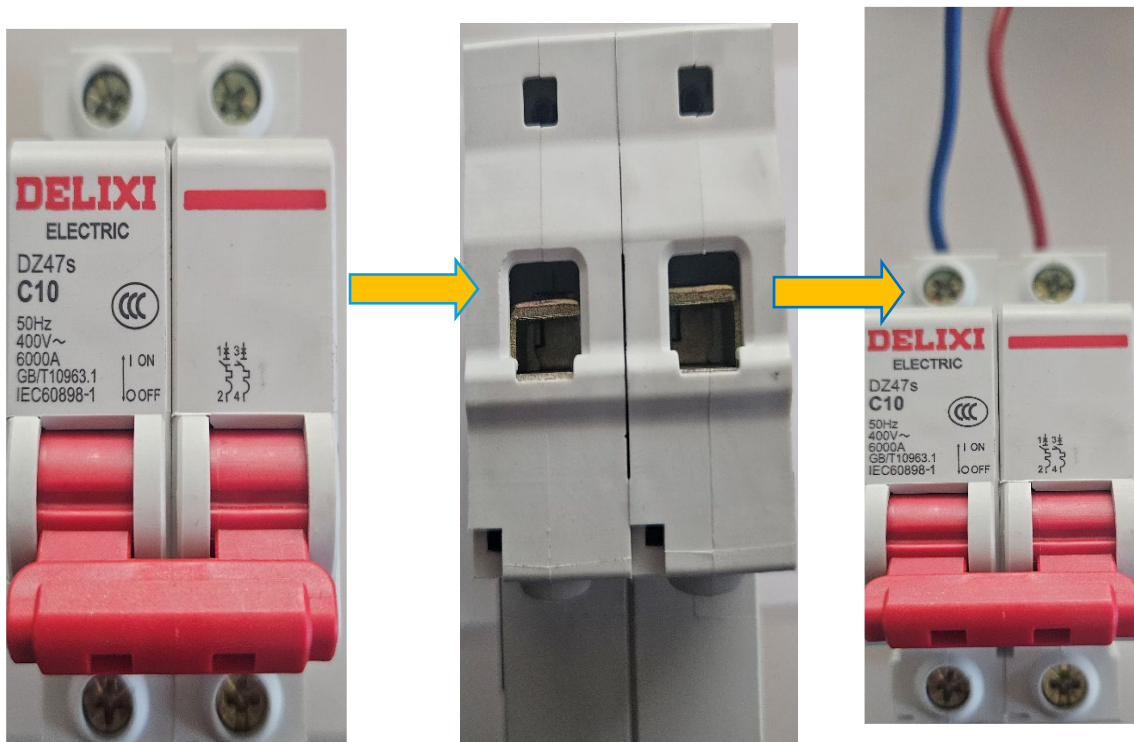


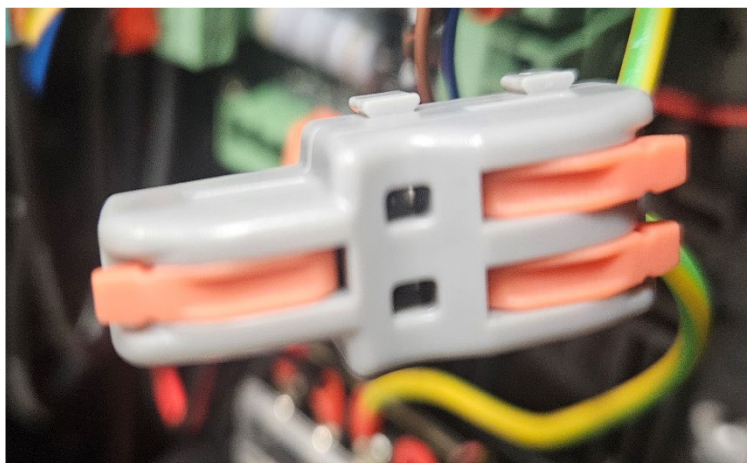
- 4) Determine the drilling points and drill the holes for the supplied anchor bolts or M12 expansion bolts.
- 5) After preparing the mounting surface, place the gates there.



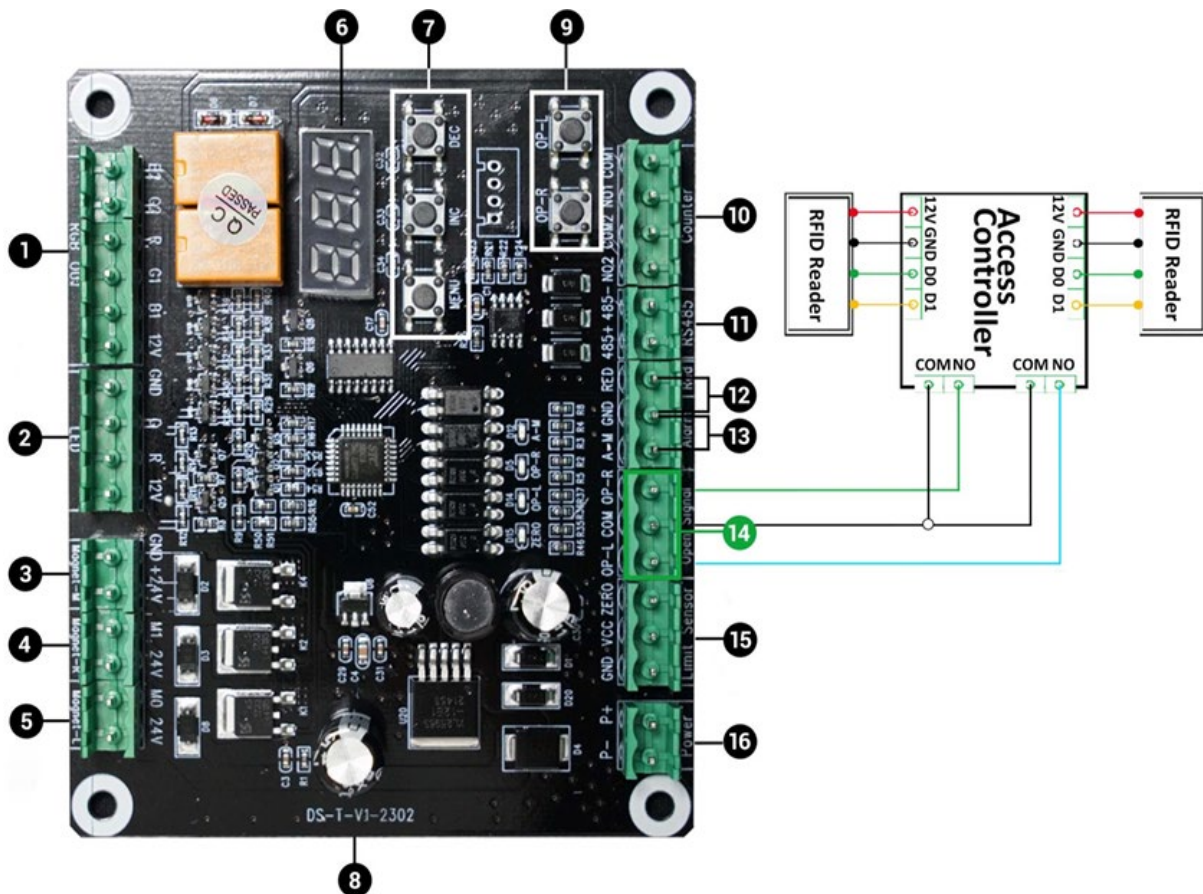
6) Wire the power cable as shown in the pictures.



7) Connect the protective earth cable to the system.



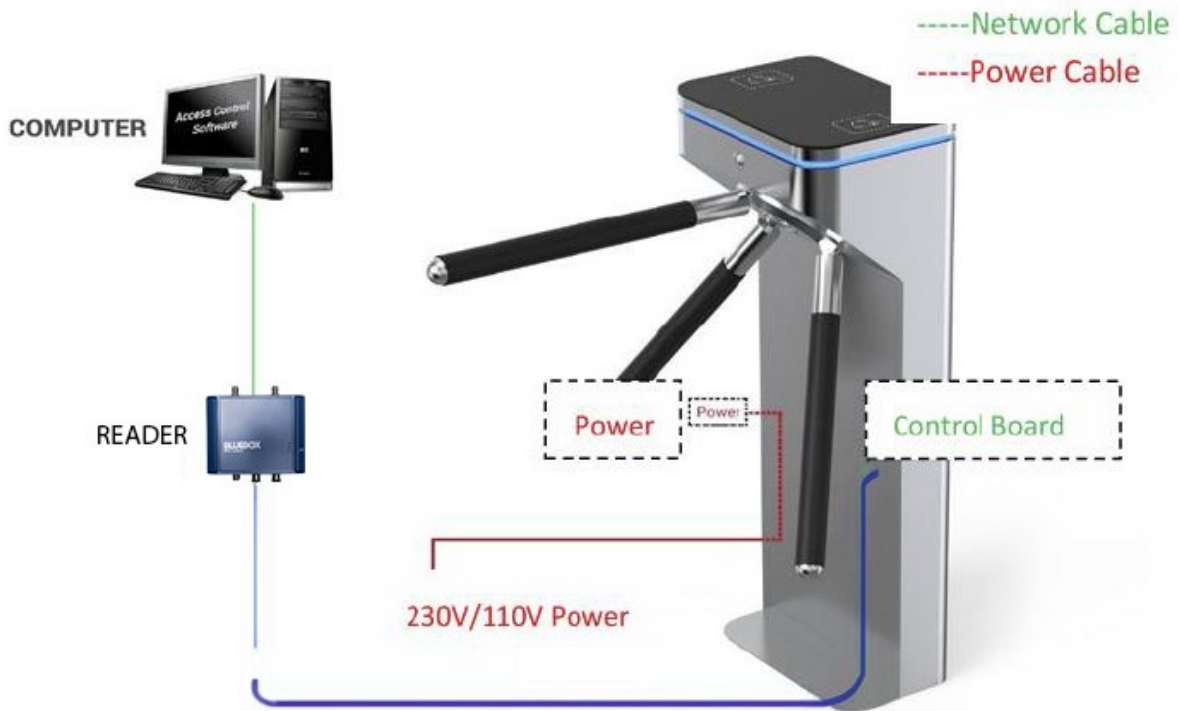
- 8) Check the main wiring according to the wiring diagram, check whether the power cable and the wiring of all other components are free of faults.
- 9) Once the installation is complete, please check the wiring of the protective earth cable, the terminal connections on the main board and all moving parts of the appliance. Ensure that the connections are tight to prevent future damage due to extended periods of operation.
- 10) If screws or parts are loose, please tighten them.



1. RGB: RGB 3-Color Light
2. LED: Green and Red Led
3. Magnet-M: Magnet Middle
4. Magnet-R: Magnet Right
5. Magnet-L: Magnet Left
6. Display Screen
7. MENU/INC/DEC: Master Board
Parameter Setting Button
8. DS-T-V1-2302: Version Number
9. OP-R/OP-L: Gate Opening Test Button

10. Counter
11. RS485
12. Red+GND: ① Invalid Card Shows Red Light
② Forbid: Gate Access Prohibited
13. Alarm+GND: Fire Alarm Function
14. Open Signal Access Control
OP-L: Open Left
COM: Common Terminal
OP-R: Open Right
15. Limit Sensor
16. Power Supply: 24V (Für die Hauptplatine)

- 11) Once the visual inspection of the ID-Gate 6200 has been completed and is fault-free, the arms of the turnstile can be installed and the functions tested.



iDTRONIC

**Ludwig-Reichling-Straße 4
67059 Ludwigshafen am Rhein
helpdesk@idtronic.de**